

Instruction Manual

VISAM Touchpanel



VTP-IC120

A product of the
***VBASE* – HMI/SCADA – family**

Dokument: HB_VTP_IC120_v1.0e
Version: 1.0, English

VISAM
■■■■■■■■■■ *Industrie IT*

Copyright © 2014 by VISAM GmbH
All rights reserved

VISAM GMBH

Irlicher Straße 20
D-56567 Neuwied

Tel.: +49 (0) 2631 941288 – 0

Fax: +49 (0) 2631 941288 – 9

E-Mail: info@visam.de

Internet: <http://www.visam.de>

Technical Support

Tel.: +49 (0) 2631 941288 – 40

E-Mail: support@visam.de

We have taken all possible measures to ensure the correctness and completeness of this documentation. Despite all care, errors cannot be avoided and we would appreciate any information or ideas at any time.

We point out that the in the document used software and hardware terms as well as the trademarks of their respective companies are generally subject to trademark protection, trademark or patent protection.

Table Of Content

1	IMPORTANT EXPLANATION	5
1.1	Legal Bases	5
1.1.1	Copyright.....	5
1.1.2	Personnel Qualification	5
1.1.3	Intended Use	5
1.1.4	License Agreement.....	5
1.2	RANGE OF VALIDITY	6
1.3	Used Symbols	6
2	INTRODUCTION	7
2.1	Regarding this document.....	7
2.2	The Article- and Model number	7
3	SPECIFICATION	8
3.1	System data	8
3.2	Interfaces	8
3.3	LCD Display	8
3.4	Touchscreen	8
3.5	Power Supply.....	8
3.6	Integrated Software	8
3.7	Interface Arrangement.....	9
3.8	Connection assignment.....	9
3.8.1	Power Supply	9
3.9	Power Switch	9
3.10	Environmental Conditions	9
3.11	Safety	9
4	SOFTWARE-SETTINGS	10
4.1	Setup / Changing of the network (IP)-address	10
4.2	Save changes to settings permanently	11
4.3	Automatic Startup of the HMI-Application.....	12
4.4	FTP-Server, Data Transmission	12
4.5	TouchScreen calibration	12
4.6	Remote control of the device via network.....	13
4.7	Connect network share	15
4.8	Additional Settings in Windows CE.....	16
4.9	Tools	16
4.9.1	The Tool BacklightController.....	16
4.9.2	The Tool Calibration	16
4.9.3	The Tool cmd	16
4.9.4	The Tool control.....	16
4.9.5	The Tool Draw Demo	16
4.9.6	The Tool JETCET PDF Viewer	17
4.9.7	The Tool Office 2003 Excel Viewer.....	17
4.9.8	The Tool Office 2003 PowerPoint Viewer	17
4.9.9	The Tool Office 2003 Word Viewer	17
4.9.10	The Tool Regedit.....	17
4.9.11	The Tool Reset.....	17
4.9.12	The Tool Right Button	17
4.9.13	The Tool savereg	17
4.9.14	The Tool vncconfig	17
4.9.15	The Tool Wordpad	17

4.10	VTP Tool.....	18
4.10.1	General.....	18
4.10.2	User / Authorizations.....	19
4.10.3	FTP-Server.....	21
4.10.4	Telnet-Server	22
4.10.5	Shares.....	22
4.10.6	Display Settings.....	23
5	APPENDIX	24
5.1	PIN-Assignment of the serial interfaces.....	24
5.1.1	Serial InterfaceSchnittstelle RS-232 (COM1 / COM2).....	24
5.1.2	Serial Interface RS-422/RS-485 (COM1).....	24
5.4	Dimension and Weight	25
5.4.1	Weight	25
5.4.2	Dimension /Cut out.....	25
5.5	Illustration directory	26

1 Important Explanation

To ensure the user a fast installation and startup of the described devices it is essential to carefully read and note the following instructions and hints.

1.1 Legal Bases

1.1.1 Copyright

This document including all images therein is copyrighted. Any use of this document that infringes the copyright provision is not permitted. Reproduction, translation into other languages as well as electronic and photo-technical archiving and alteration requires the written approval of VISAM GmbH, D-56567 Neuwied. Violations will be prosecuted with damage claims.

The VISAM GmbH reserves changes that serve the technical improvement. All rights in the event of grant of a patent or utility model protection are reserved to VISAM GmbH. Foreign products are always named without referring to patent rights. The existence of such rights cannot be excluded.

1.1.2 Personnel Qualification

The construction of the following instruction and the usage of the VBASE-product family require basic knowledge about the used windows operating system and the used remote systems. (e.g. SPS)!

The in this document described product use is directed exclusively to professionals or trained personnel, who are also familiar with the valid standards.

The VISAM GmbH offers at request inexpensive training for the use of the here described products.

1.1.3 Intended Use

The systems are delivered from factory with the specific use case and with a dedicated hardware and software configuration. Alterations are only allowed in the context of the in the documentation featured possibilities. All other changes to the hardware or software and the non-conforming use of the systems nullify the liability of VISAM GmbH.




1.1.4 License Agreement

The usage of all in this documentation described programs and program parts are subject to the VBASE license agreement.

1.2 Range of Validity

This document provides a general description, in conjunction with certain hardware and/or software. Note the latest and detailed descriptions accompanying the products!

1.3 Used Symbols

	Note Information that should be noted to ensure a faultless and effective operation.
	Hint Tips and hints for the efficient use of the system respectively system optimization.
	ESD Warning of damage to the system / components by electrostatic discharge. Precautions should be taken when handling electrostatically sensitive components.

2 Introduction

2.1 Regarding this document

This manual is intended to clarify the use of the VISAM TouchPanel devices („VTP“). In this document the device specific setting and possibilities are described.

The handling of the on this device installed VBASE HMI/SCADA software is described in a separate description.

2.2 The Article- and Model number

At this point a brief commentary on the article and model numbers of these VTP series is given.

The model number is rather general and serves as a rough identification of the VTP. The model number provides information about the operation system, the display size and the built-in version of the VTP.

The article number however contains even more information. In the following figure, the part of the article number is further explained.

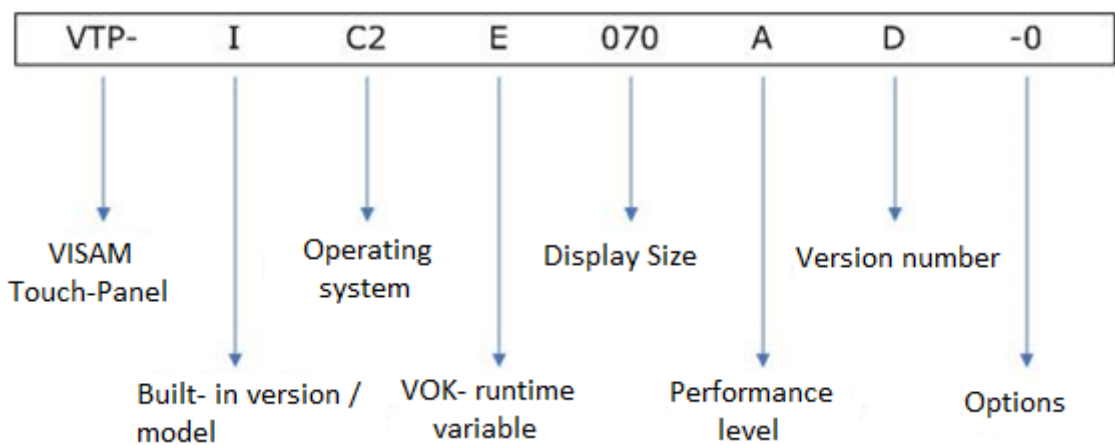


Figure 1 The information of the article number

3 Specification

3.1 System data

Processor (CPU): Intel Atom N270 1,6 GHz
Graphic (VGA): Intel 945GSE
Ram: 1 GB DDR2 SDRAM (SO-DIMM)
Data memory: CompactFlash, 2,5" SATA HDD
LAN: RTL8111b 10/100/1000 Base-T Ethernet-Controller
Watchdog Timer: 0 ~ 255 seconds
Memory module slot: CompactFlash 2.0 type I/II

3.2 Interfaces

Serial Interface: 1 x RS232 (COM2), 1 x RS232 / RS422 / RS485 (COM1)
Other: 1 x VGA, 1 x Line-out,
Network (LAN): 1x 10/100/1000 Mbit/s Ethernet (RJ45)
USB: 4 x USB 2.0
Extension: 1 x PCIe Mini Card

3.3 LCD Display

Display Type: SVGA TFT LCD
Size: 12,1"
Maximum Resolution: 800 x 600 Pixel
Viewing Angle (H/V): 160°/140°
Brightness: 450 cd/m²
Backlight (Type): LED
MTBF (Backlight): 20.000 hours

3.4 Touchscreen

Type: analog-resistive
Controller: Penmount
Translucent: ~ 70%
Lifespan: 1 million touches (with the finger)

3.5 Power Supply

Supply Voltage: 10 ~ 30 VDC
Electricity demand (maximum): 1,25 A (typical: 0,8 A at 24 VDC)

3.6 Integrated Software

Operating system: Microsoft Windows CE6.0
HMI/SCADA: VBASE runtime environment

The integrated software is embedded software that may be only operated on the delivered hardware system!

3.7 Interface Arrangement

The arrangements of the interfaces are depicted in the following figure:

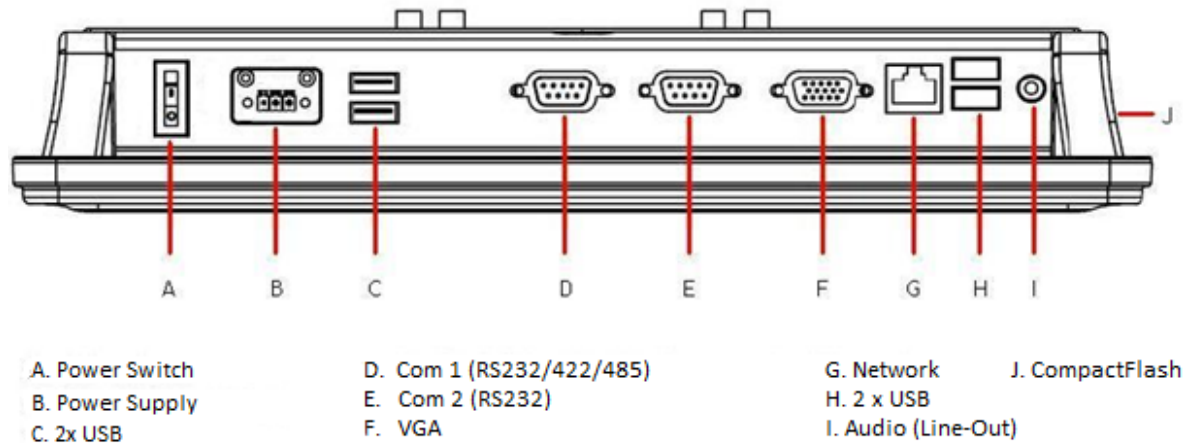


Figure 2 Interface Arrangement

3.8 Connection Assignment



3.8.1 Power Supply

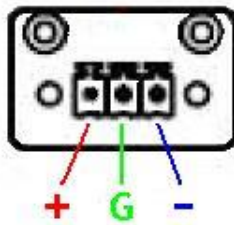


Figure 3 Plug Power Supply

3.9 Power Switch

The power switch (ATX-switch) is located left of the power supply plug (see figure 2).

3.10 Environmental Conditions

Environmental Temperature (while operating): 0 ~ 45°C

Humidity: 10% ~ 90% at 40°C (non-condensing)

3.11 Safety

Safety front side: IP65 / NEMA 4

4 Software-Settings

4.1 Setup / Changing of the network (IP)-address

To change the network-address of the device, follow these instructions:
Open the windows start-menu << Settings. Select the point "Network and Dial-Up Connections".

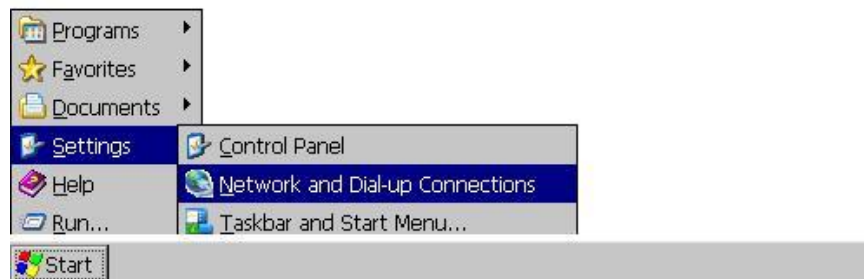


Figure 4 Windows Start-Menu



Figure 5 Connection settings

Here open the property of the network card by a double click on its name, here „RTCNIC1“.

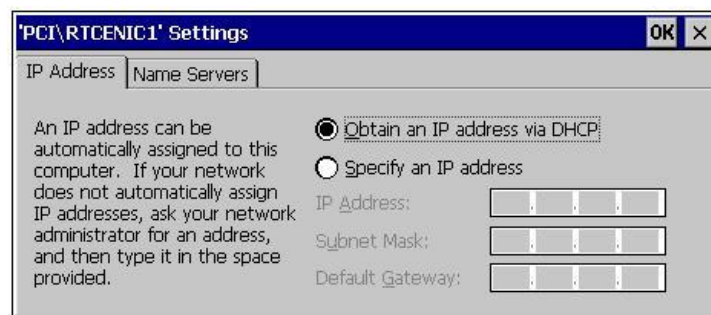


Figure 6 Ethernet-settings

In the now opened property-window insert the desired network „IP-address“, „Subnet Mask“, and if needed the „Default Gateway“. In the second tab „Name Servers“ the IP-address of the „DNS-Server“ and the „WINS-Server“ can be inserted. Confirm the input by clicking on „OK“ (top right). Close the window „Network and Dial-Up Connections“.



Save your settings by saving the „Registry“ as described in the following section!

4.2 Save changes to settings permanently

If you make changes in the area of the operating system (e.g. network- or display-settings) please note that after each change, the registry file „Registry“ must be saved. **If not, all changes are lost at the shutdown respectively restart of the device!**

The tool for the permanent saving of the registry “Registry Saver” can be found in the Start-Menu >> “Programs” >> “Tools”.

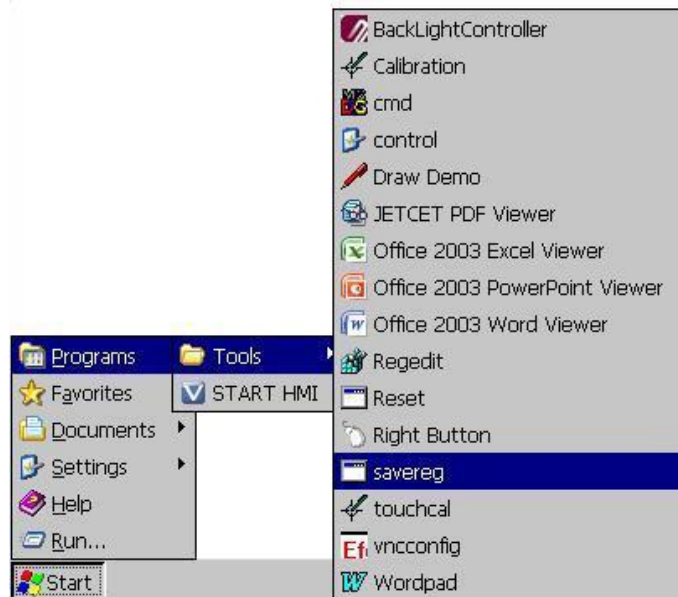


Figure 7 Save registry „saverreg“

After saving the registry a confirmation is shown by the program.

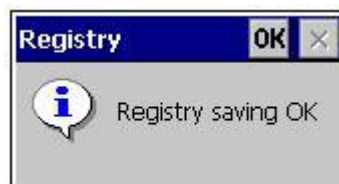


Figure 8 Confirmation about the saved registry

4.3 Automatic Startup of the HMI-Application

The VBASE-HMI-runtime environment (VOK) starts automatic after starting and booting of the device.

Was the HMI-Application and as such the runtime environment shutdown, it can be restarted with the help of the icon "START HMI" respectively by selecting it from the Start-Menu > "Programs" without having to restart the whole device.

The runtime environment with all accessories is located (ex-factory) in the directory:

"\\HardDisk\\VOK\\"

4.4 FTP-Server, Data Transmission

The device features an integrated FTP-server which enables a simple data transfer with the device.

Please note that the FTP-Server is configured ex-factory in a way that after inputting username and password, full access to the device is granted.

To restrict the accesses respectively to secure the device against unauthorized usage, the on the device installed VTP-Tool (see section 4.10) can be used.

The default settings ex-factory are:

IP-Address: Default = DHCP (the device tries to retrieve an IP-address from the DHCP-server).

User: admin

Password: visam

FTP-Directory: /Harddisk/

The FTP-Server is also used by the VBASE-Editor for the transmission of projects and the setup of the device (see Help-system of the editor).

4.5 TouchScreen calibration

It is possible to recalibrate the Touchscreen controller of the VTP from time to time. A recalibration is needed if the mouse cursor is not displayed at the touch point, but at a different position.

To calibrate select from the Start-Menu: „Settings“ >> Control Panel and then the program „Calibration“.

A program window opens up and offers three methods with different accuracy (different number of calibration points) as touchscreen calibration. The higher the number of calibration points the more accurate can the touchscreen be set up. The default method is the 9-point-calibration. It is automatically started after a few seconds if no other method is chosen manually.

Follow the instructions on the screen and touch the corresponding calibration points successively on the touchscreen.

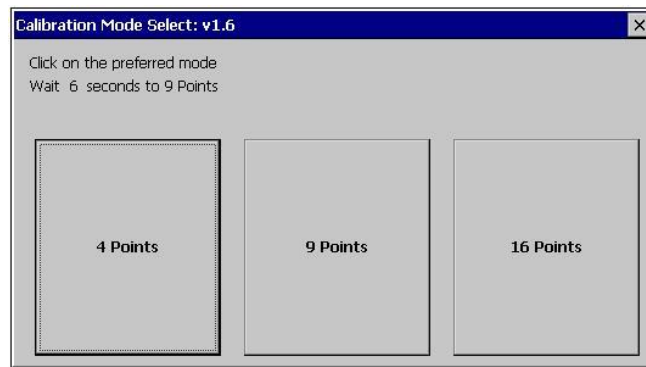


Figure 9 TouchScreen-Calibration



Save your settings by saving the „Registry“ as described in the section „Save Changes to settings permanently“!

4.6 Remote control of the device via network

To remote control the device for a comfortable setup and maintenance, the application „VNC-Server“ is available. Ex-factory the license-free tool „Efon VNC“ is installed on the device.

On the PC-system from which you want to connect to the panel, a compatible VNC-Viewer (e.g. UltraVNC) must be installed and a network connection must be established

Ex-factory the VNC-Server is provided with a default-password („visam“). At the connection establishment the password will be queried.



Figure 10 VNC-Connection Establishment Remote Control

After the successful connection establishment the surface of the device can be used in a window (the VNC-Viewer) on the PC-system.

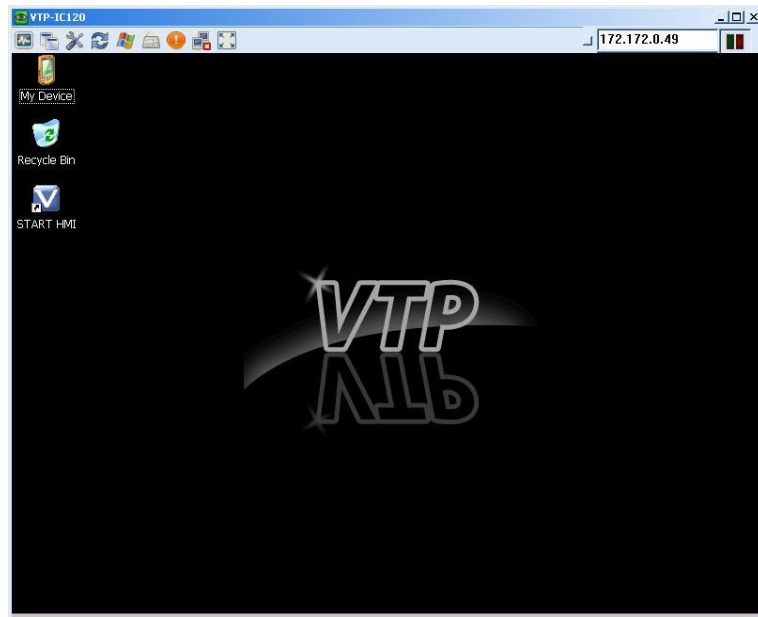


Figure 11 Remote-Desktop

Within this window the VTP (depending on the settings of the VNC-connection) can be remotely controlled with the mouse and the keyboard.

The password and additional settings for the VNC-Server respectively the VNC-Connection can be changed according to your needs with the help of the program „vnconfig“. The VNC-Server is configured ex-factory that you don't need to make any changes. The program „vnconfig“ can be found in the Start-Menu >> „Programs“ >> „Tools“.

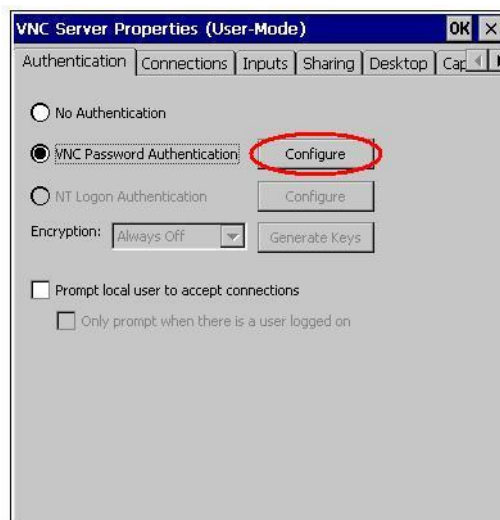


Figure 12 VNC-Server Settings

The password of the VNC-Connection can be changed by clicking the button „Configure“ (see Figure 12).



Save your settings by saving the „Registry“ as described in the section „Save Changes to settings permanently“!

4.7 Connect network share

A VTP can be connected to a PC-system respectively a server in a network to directly transmit data to these (e.g. Journaling).

To connect the VTP with a shared drive or directory on a to the network connected system, proceed as follows:

Select in the Start-Menu >> „Programs“ >> „cmd“.

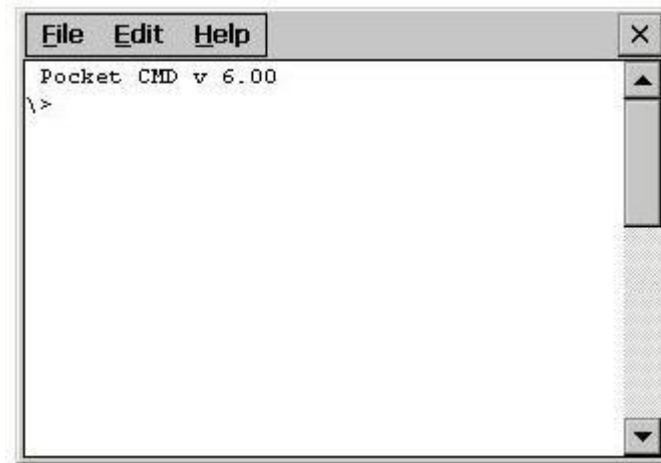


Figure 13 Prompt

Enter here the following commands:

```
"net use <share-name> \\servername\share /user:<user>
/password:<password>"
```

„<share-name>“ – represents individual used name for the share.

„\\servername\share“ – describes the share on a distant device.

„<user>“ – represents the name of the user, who has the authorization to use the share.

„<password>“ – Represents the password which is used for the user that has the authorization to use the share.

After the successful input the share can be found at "My Device" >> "Network" >> "share-name".



Save your settings by saving the „Registry“ as described in the section „Save Changes to settings permanently“!

4.8 Additional Settings in Windows CE

The installed operating system allows a series of additional settings which will not be considered in this description.



Always save your settings by saving the „Registry“ as described in the section „Save Changes to settings permanently“!

4.9 Tools

In the menu „programs“-„Tools“ some helpful programs can be found:

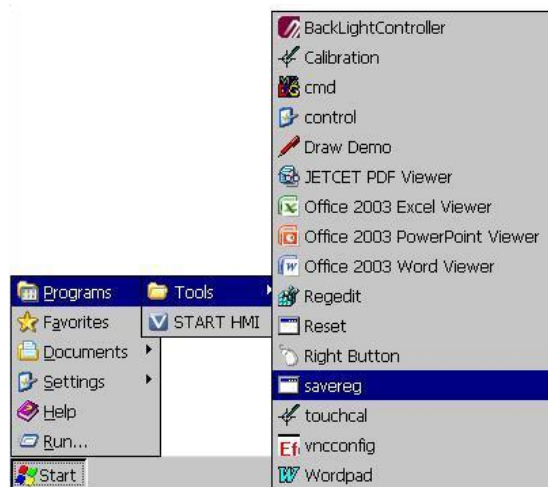


Figure 14 Tools in the menu „Tools“

4.9.1 The Tool BacklightController

With the help of this program the screen can be turned off after an adjustable time.

4.9.2 The Tool Calibration

„Calibration“ serves as calibration of the touchscreen (see chapter 4.5).

4.9.3 The Tool cmd

„cmd“ provides the prompt of the operating system Windows CE.

4.9.4 The Tool control

„control“ opens the settings-directory of the operating system Windows CE.

4.9.5 The Tool Draw Demo

„Draw Demo“ is a simple draw-tool and can be used for the inspection of the touchscreen.

4.9.6 The Tool JETCET PDF Viewer

„JETCET PDF Viewer“ is a simple program to view PDF-files.

4.9.7 The Tool Office 2003 Excel Viewer

„Office 2003 Excel Viewer“ is a program to view XLS- and XLT-files (Microsoft-Excel).

4.9.8 The Tool Office 2003 PowerPoint Viewer

„Office 2003 PowerPoint Viewer“ is a program to view PPT- and PPS-files (Microsoft PowerPoint).

4.9.9 The Tool Office 2003 Word Viewer

„Office 2003 Word Viewer“ is a program to view RTF- and DOC-files (Microsoft Word).

4.9.10 The Tool Regedit

„Regedit“ opens the registry-editor.



Modifying the registry can cause irreversible damage to the operating system and is done at your own risk!

4.9.11 The Tool Reset

„reset“ executes a restart (warm start) of the system.

4.9.12 The Tool Right Button

„Right Button“ is a program with which the right mouse button can be simulated on the device via the touchscreen.

4.9.13 The Tool savereg

„savereg“ saves the registry (see chapter 4.2).

4.9.14 The Tool vnconfig

„vnconfig“ opens the configuration of the VNC-Server (see chapter 4.6).

4.9.15 The Tool Wordpad

„Wordpad“ is the Microsoft Text Editor for Windows CE.

4.10 VTP Tool

4.10.1 General

With the „VTP Tool“ a tool is provided that can adjust a series of system-settings on your VTP.

In the following chapters the possibilities of these programs are described.



Always save your settings by saving the „Registry“ as described in the section „Save Changes to settings permanently“!

To open the program double-click the symbol „My Device“ on the desktop of the VTP. In the now open window double-click on the symbol „HardDisk“. In the next view the program „VTP Tool“ can be found and opened by double-clicking. After starting the program the following surface appears:

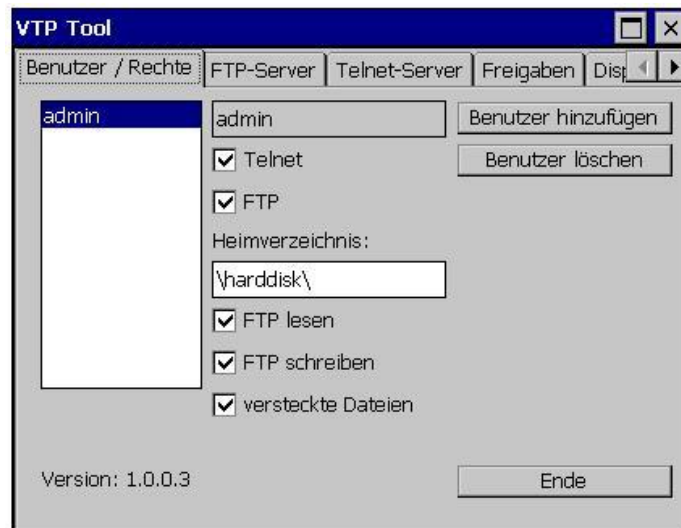


Figure 15 VTP Tool Start Picture

In the top area of the program window five tabs are lined up, which contain the different setting options.

By clicking the corresponding tab the view changes accordingly.

As in figure 15 depicted the last tab cannot be completely displayed. But the tabs can be moved by clicking the small arrows in the top right.

Requirements for the functionality of the VBASE-runtime environment:

The following settings should not be changed at all. They are part requirements for the VBASE-project transmission from and to the VBASE-runtime environment (VOK).

Firstly, the FTP-Server must be activated that a VBASE-project (files) from the VBASE-Editor can be transmitted to the VTP or vice versa. On the other hand the Telnet-Server must be activated. This is necessary so that the VBASE runtime environment can be stopped by the VBASE-Editor for example before transmitting a VBASE project and subsequently be restarted.

At the delivery of the VTP the FTP-Server and the Telnet-Server are both activated with all options. The FTP-Server has also a default directory specified.

This is the directory which is accessed by default when connecting via a FTP-Connection (even anonymous, if this option is checked). This directory must contain the folder "VOK". Both connection types can be set to password-protected or anonymous login. If you decide to password-protect the connections (the option „Use user login“ must be activated) ensure that the corresponding user has the required authorizations. In this case it is advised to deactivate the option for the anonymous access to the FTP-Server.

4.10.2 User / Authorizations

This tab features the user administration for your VTP. Here you have the possibility to create new user, change user authorizations or to delete user. To change the password of an user, create the user another time but enter another password. The settings for the user remain. The user „admin“ is already created at delivery. The password for the user „admin“ is „visam“. So the user „admin“ is already shown in the list (see figure 16).

Add user:

To add a new user click on the button „Add User“. Another window opens up in which the new user-name and the corresponding password can be entered. (see figure 16). Note that the user password will be displayed in clear text.

As soon as you click in one of the input fields a small window with a desktop-keyboard appears - the „Input Panel“. With the help of this keyboard you can directly process the inputs on the VTP if you do not remotely control the device.

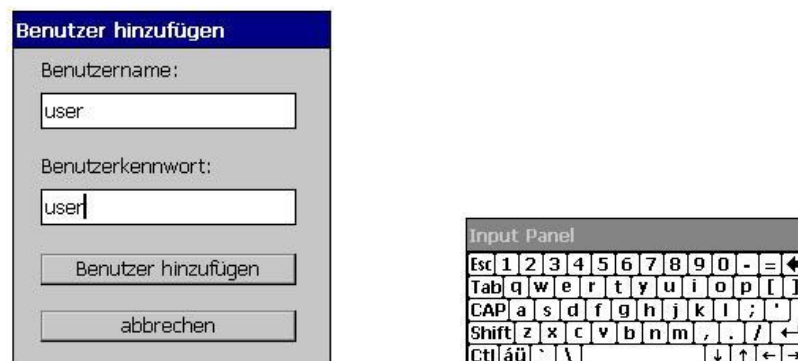


Figure 16 VTP Tool – creation of a new user and the „Input Panel“

Confirm your inputs by clicking on the button "Add User". The window will be closed and the new user will be inserted in the first place of the list (see figure 17). Additionally the home directory ("\\Harddisk\\") will be inserted automatically. This directory is the default directory on the VTP on which the user has access via the FTP-connection. At this point the access can be restricted to another directory.

Change of user authorizations:

To change the authorizations of a user the corresponding user must be selected by double-click from the entry of the list. The selected user is then displayed with a black frame (see red highlight in figure 17). Now the authorizations of this user can be changed. It can be determined if this user has access to the VTP via FTP- or Telnet-connection. The setting of these authorizations respectively their functionality require the activation of the Telnet- respectively the FTP-server on the VTP (see chapter 4.10.3 and 4.10.4). If the user was granted access via FTP-connection, the input field „Home directory“ must be edited to the directory to

which the user should have access to. The default-home directory („\Hardisk\") is automatically inserted when creating a new user. This entry can be changed according to your needs. By clicking into the input field the „Input Panel“ will be shown, to directly allow inputs on the VTP.

Additionally the access authorizations of the FTP-connection of the user can be restricted. Thereby the option "FTP read" means a read-access to the home directory. The option "FTP write" allows the user to write files into the home-directory and to change or delete existing files. If the option "hidden files" is checked, the user can see all hidden system-files in this directory and is able to change and/or delete them.

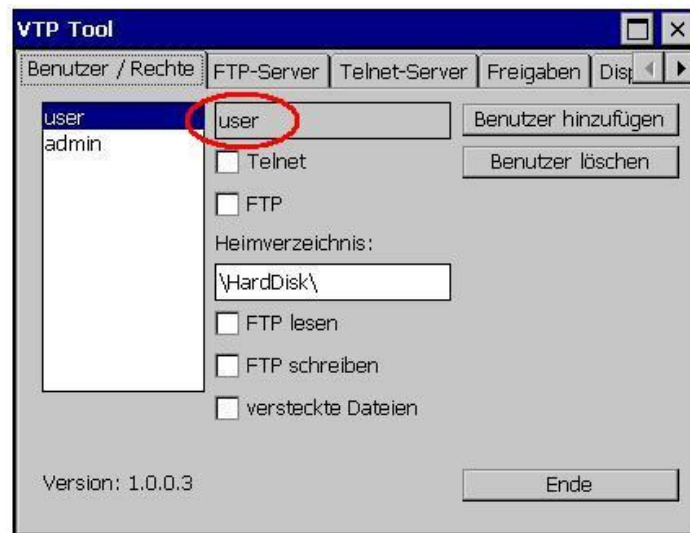


Figure 17 VTP Tool – change of user authorizations

Delete user:

To delete a user the corresponding user must be selected with a double-click from the entry in the list. The selected user will then be displayed with a black frame (see red highlight in figure 17). Now click on the button "Delete user". The corresponding user will be deleted from the list.

4.10.3 FTP-Server



Figure 18 VTP Tool FTP-Server settings

In this tab the „global“ settings for the FTP-server can be determined. The first option activates – if checked – the FTP-server on this VTP. This and the fourth option are prerequisites that user, which were granted FTP-access, can properly use these authorization.

The second option allows an anonymous user to establish a FTP-connection to the below stated default-directory. Neither a user name nor a password must be specified.

The third option allows an anonymous user to write files into the default-directory.

The fourth option allows besides an anonymous FTP-connection to the default-directory also the FTP-connection to the home-directory with a corresponding user login.

The entry in the input field „Default-directory“ determines the directory to which an anonymous user has access to.

4.10.4 Telnet-Server

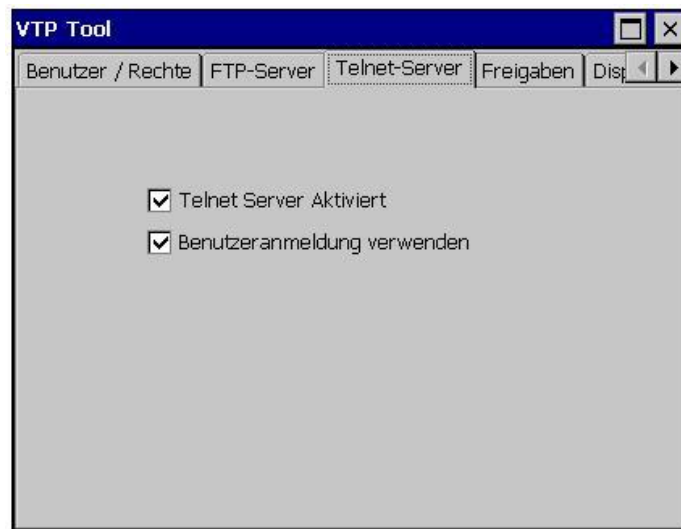


Figure 19 VTP Tool Telnet-Server settings

In this tab the „global“ settings for the Telnet-server can be edited. The first options - if checked - activates the Telnet-server on this VTP. This option allows the Telnet-access to the VTP without specifying any user information. This function is required to start or stop the VBASE-runtime environment (VOK) via the VBASE-editor

The second option restricts the access to the VTP via Telnet to the users, that have the corresponding authorization for the Telnet-access. If this option is checked, a user login is required for the Telnet-access.

4.10.5 Shares

In this tab the network-shares for the different directories, which can be found in „My Device“, can be setup. The only thing needed is to enter a share-name into the input-field behind the directory that should be shared. When clicking into the corresponding input-field, the „Input Panel“ shows up to be able to perform inputs directly from VTP.

Afterwards confirm your input by clicking the button „Add“.

To remove a share simply click on the button „Remove“ adjacent to the according share and the entry will be removed.

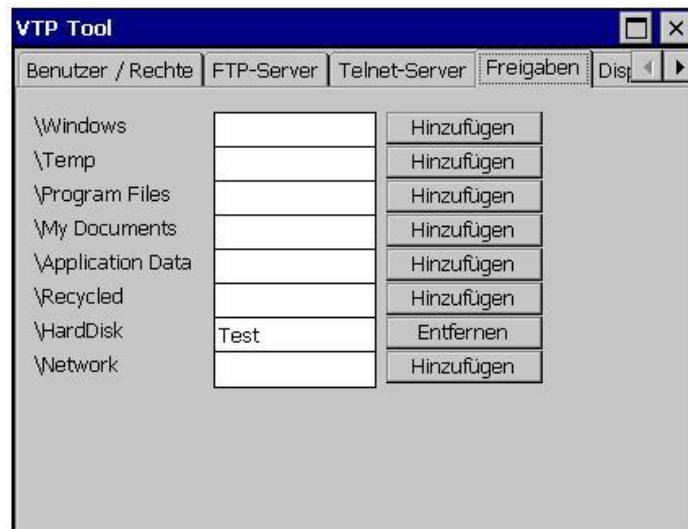


Figure 20 VTP Tool Shares

4.10.6 Display Settings

This function is not available for this device (VTP-IC120) within the application „VTP-Tool“. But it is possible to turn off the screen after an adjustable time with the program “BacklightController”.

5 Appendix

5.1 PIN-Assignment of the serial interfaces



5.1.1 Serial Interface RS-232 (COM1 / COM2)

PIN No.	Description
Pin 1	DCD
Pin 2	RX
Pin 3	TX
Pin 4	DTR
Pin 5	GND
Pin 6	DSR
Pin 7	RTS
Pin 8	CTS
Pin 9	RI



Figure 21 PIN-Assignment of the RS-232-Interface (COM1 / COM2)

5.1.2 Serial Interface RS-422/RS-485 (COM1)

PIN No.	Description (RS-422 / RS-485)	
Pin 1	TX-	Data-
Pin 2	TX+	Data+
Pin 3	RX+	
Pin 4	RX-	
Pin 5		
Pin 6		
Pin 7		
Pin 8		
Pin 9	GND	GND

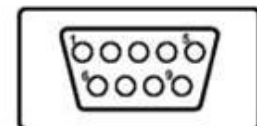


Figure 22 PIN-Assignment of the RS-422-/RS-485-Interface (COM1)

5.4 Dimension and Weight

5.4.1 Weight

Weight: 2,48kg

5.4.2 Dimension /Cut out

Dimension: 328 x 262 x 52 mm (width x height x depth)

Cut out: 312 x 250 mm

Maximum thickness for panel mounting: < 10mm

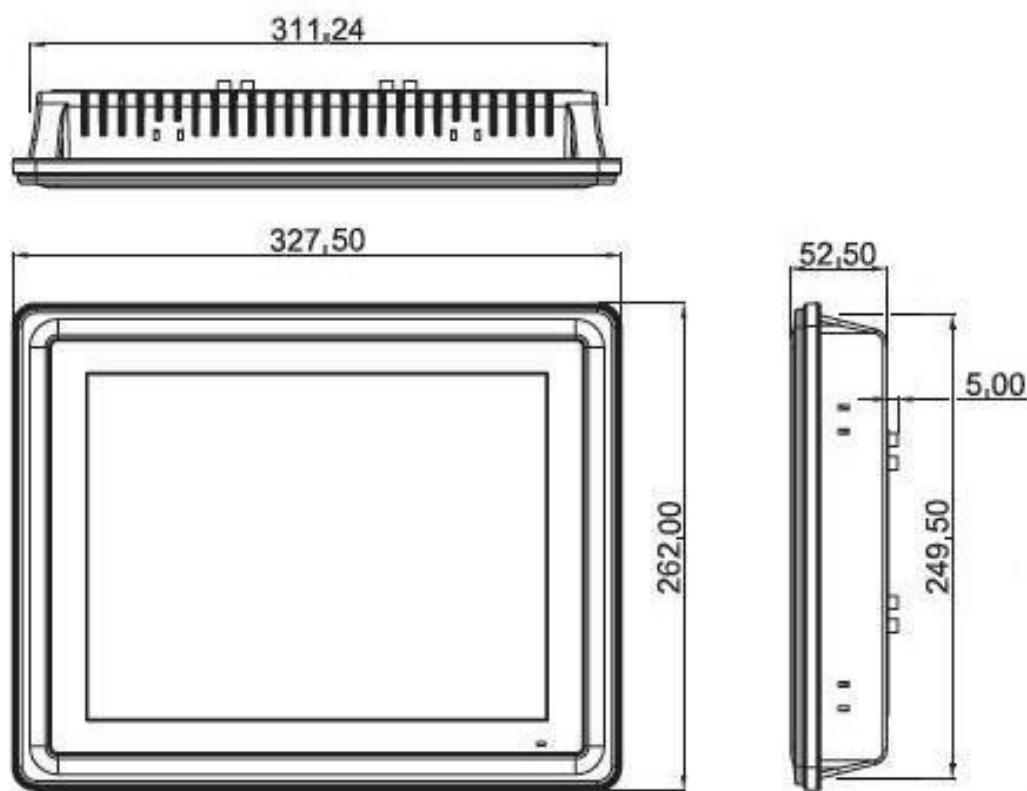


Figure 23 Dimension VTP-IC120

Besides the installation of the device it is also possible to attach the VTP with a VESA-holder (MIS-D 75x75 / 100x100mm).

5.5 Illustration directory

Figure 1 The information of the article number	7
Figure 2 Interface Arrangement.....	9
Figure 3 Plug Power Supply.....	9
Figure 4 Windows Start-Menu	10
Figure 5 Connection settings	10
Figure 6 Ethernet-settings	10
Figure 7 Save registry „savereg“.....	11
Figure 8 Confirmation about the saved registry	11
Figure 9 TouchScreen-Calibration	13
Figure 10 VNC-Connection Establishment Remote Control.....	13
Figure 11 Remote-Desktop	14
Figure 12 VNC-Server Settings	14
Figure 13 Prompt.....	15
Figure 14 Tools in the menu „Tools“	16
Figure 15 VTP Tool Start Picture	18
Figure 16 VTP Tool – creation of a new user and the „Input Panel“.....	19
Figure 17 VTP Tool – change of user authorizations.....	20
Figure 18 VTP Tool FTP-Server settings	21
Figure 19 VTP Tool Telnet-Server settings.....	22
Figure 20 VTP Tool Shares	23
Figure 21 PIN-Assignment of the RS-232-Interface (COM1 / COM2).....	24
Figure 22 PIN-Assignment of the RS-422-/RS-485-Interface (COM1)	24
Figure 23 Dimension VTP-IC120	25